

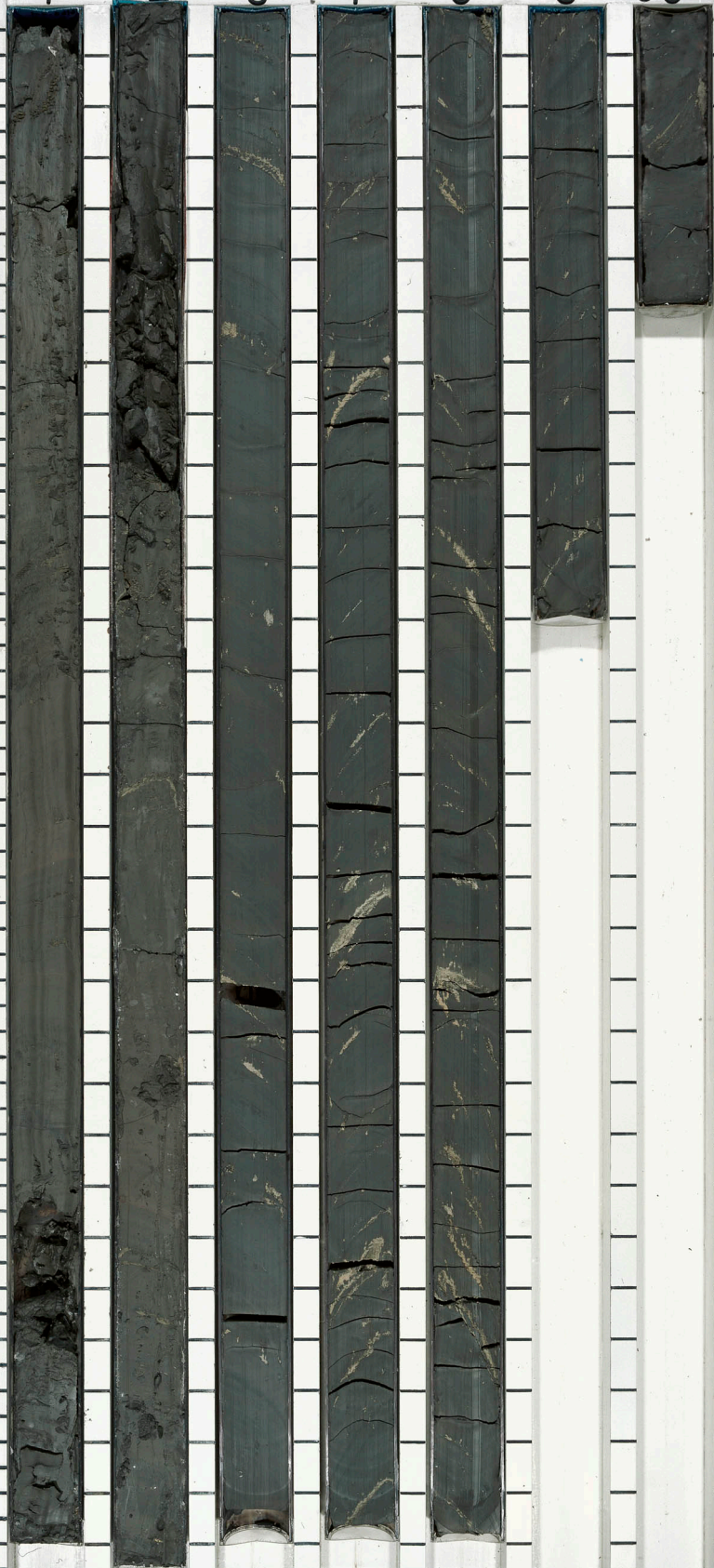
LEG  
09  
09

SITE  
6  
-  
6

HOLE  
B

CORE  
4H

5  
10  
15  
20  
25  
30  
35  
40  
45  
50  
55  
60  
65  
70  
75  
80  
85  
90  
95  
100  
105  
110  
115  
120  
125  
130  
135  
140  
145  
150



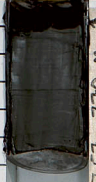
PHOTOGRAPHED  
JULY 12, 1993

1-CC 2-CC 3-CC 4-CC 5-6 5-CC 6-CC 7-CC

LEG  
96  
SITE  
616  
B

SUB-BOTTOM DEPTH

5  
10  
15  
20  
25  
30  
35  
40  
45  
50  
55  
60  
65  
70  
75  
80  
85  
90  
95  
100  
105  
110  
115  
120  
125  
130  
135  
140  
145  
150



↑ 7.57 - 7.70 M ↑



↑ 17.01 - 17.3 M ↑



↑ 26.63 - 26.9 M ↑



↑ 36.2 - 36.5 M ↑



↑ 45.0 - 45.69 M ↑



↑ 45.69 - 46.1 M ↑



↑ 55.3 - 55.7 M ↑



↑ 63.3 - 63.5 M ↑



Photo courtesy of  
Lighting, Audio by zone