

LEG
09
66

SITE
6
1
6

HOLE
B

CORE
2H

5
10
15
20
25
30
35
40
45
50
55
60
65
70
75
80
85
90
95
100
105
110
115
120
125
130
135
140
145
150



M
-
S
-
S
-
G
Z
G



CC

PHOTOGRAPHED
JULY 9, 1993

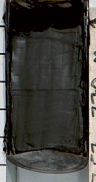
1-CC 2-CC 3-CC 4-CC 5-6 5-CC 6-CC 7-CC

LEG
96
SITE
616
B

SUB-BOTTOM DEPTH



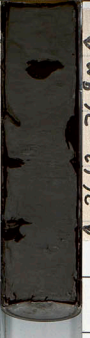
5
10
15
20
25
30
35
40
45
50
55
60
65
70
75
80
85
90
95
100
105
110
115
120
125
130
135
140
145
150



↑ 7.57 - 7.70 M ↑



↑ 17.01 - 17.3 M ↑



↑ 26.63 - 26.9 M ↑



↑ 36.2 - 36.5 M ↑



↑ 45.0 - 45.69 M ↑



↑ 45.69 - 46.1 M ↑



↑ 55.3 - 55.7 M ↑



↑ 63.3 - 63.5 M ↑

Photo completed by
Lighting, August 19, 2006