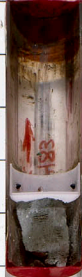


+CC

1

2

3



5  
10  
15  
20  
25  
30  
35  
40  
45  
50  
55  
60  
65  
70  
75  
80  
85  
90  
95  
100  
105  
110  
115  
120  
125  
130  
135  
140  
145  
150



LEG 65

SITE 483 HOLE

CORE 6



THIS CORE WAS

REPHOTOGRAPHED

IN 1987