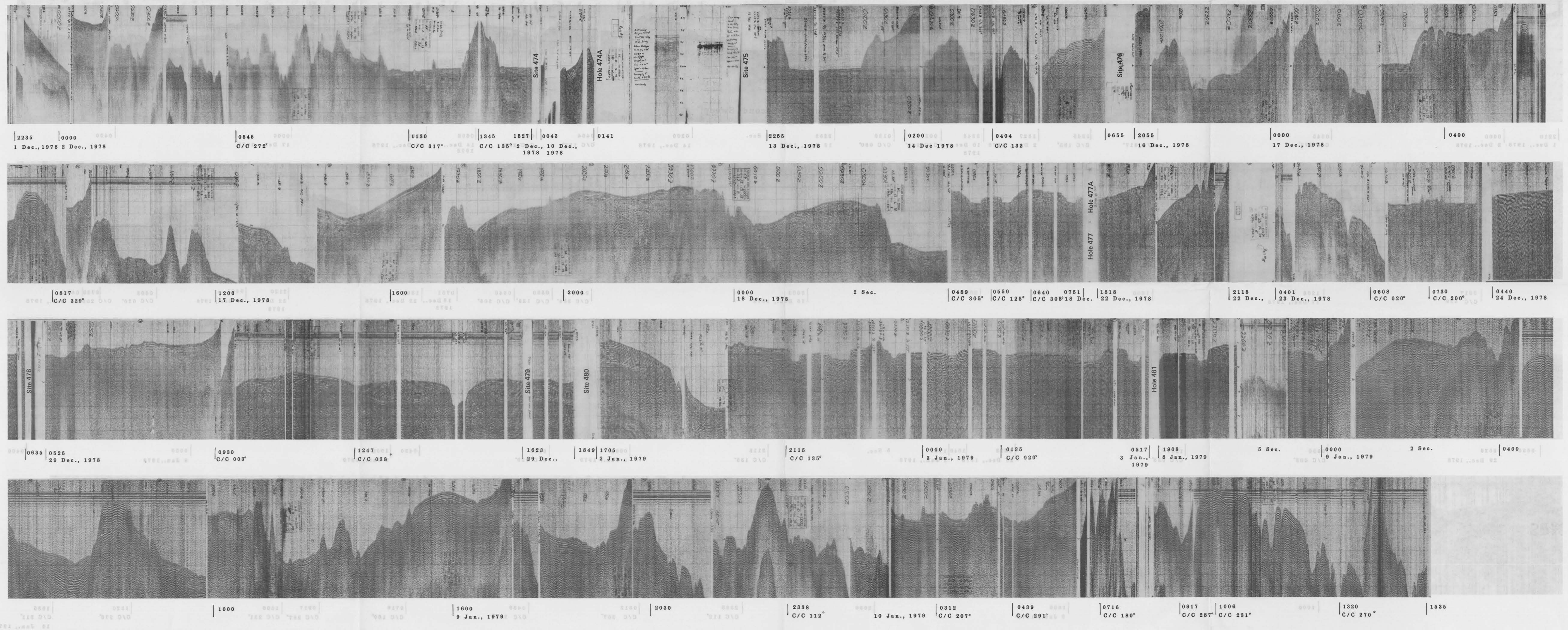


UNDERWAY SEISMIC REFLECTION PROFILES-LEG 64

Volume 64: Profile 1. Underway seismic reflection profiles - Leg 64.

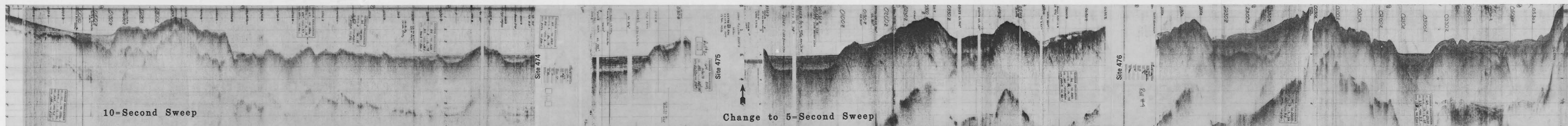
Jointly Prepared by the
Department of the Interior U. S. Geological Survey;
JOIDES; and the
Deep Sea Drilling Project, Scripps Institution of Oceanography



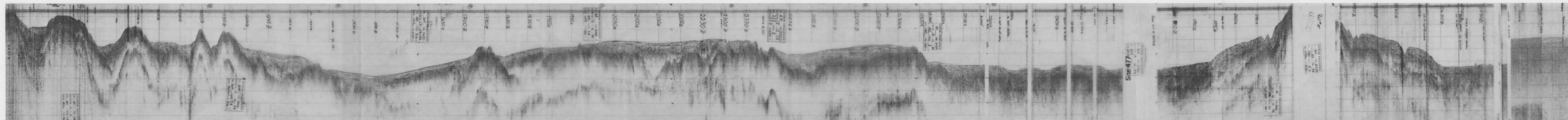
LEGEND
Source: Two Bolt Associates Air Guns (120 and 20 cubic inches)
Hydrophone Streamer: Teledyne SC 940
Recorder: Edo
Additional profiles on 35 mm microfilm.
(Sheet 2 of 4)

LEGEND
Source: Two Bolt Associates Air Guns (120 and 20 cubic inches)
Hydrophone Streamer: Teledyne SC 940
Recorder: Edo
Additional profiles on 35 mm microfilm.

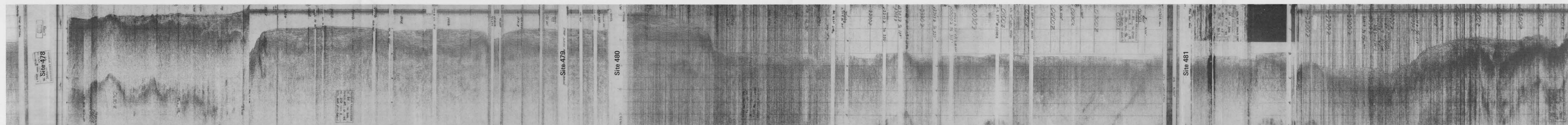
4 UNDERWAY SEISMIC REFLECTION PROFILES-LEG 64



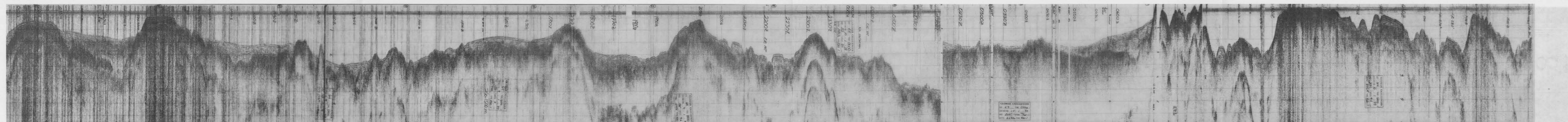
2210 0000 0545 1130 1345 1527 2343 0020 0180 2255 0200 0404 0526 0655 2055 0000 0400
 1 Dec., 1978 2 Dec., 1978 C/C 272° 11 Dec., 1978 C/C 317° C/C 135° 2 Dec., 1978 10 Dec., 1978 C/C 298° C/C 090° 13 Dec., 1978 14 Dec., 1978 C/C 132° C/C 225° 14 Dec., 1978 16 Dec., 1978 17 Dec., 1978



0817 1200 1600 2000 0000 0459 0550 0640 0751 1808 2120 0401 0608 0730 0440
 C/C 329° 17 Dec., 1978 18 Dec., 1978 C/C 305° C/C 125° C/C 305° 18 Dec., 1978 22 Dec., 1978 22 Dec., 1978 23 Dec., 1978 C/C 020° C/C 200° 24 Dec., 1978



0635 0526 0930 1247 1623 1849 1705 2115 0000 0135 0430 1908 0000 0400
 29 Dec., 1978 C/C 003° C/C 038° 29 Dec., 1978 2 Jan., 1979 5 Sec. 3 Jan., 1979 C/C 135° C/C 020° 8 Jan., 1979 9 Jan., 1979



1000 1600 2030 2338 0312 0439 0716 0917 1006 1320 1535
 C/C 210° 9 Jan., 1979 C/C 112° C/C 207° C/C 291° C/C 180° C/C 287° C/C 231° C/C 270° C/C 311°
 9 Jan., 1979 10 Jan., 1979

LEGEND
 Source: Two Bolt Associates Air Guns (120 and 20 cubic inches)
 Hydrophone Streamer: Teledyne SC 940
 Recorder: Edo
 Additional profiles on 35 mm microfilm.

LEGEND
 Source: Two Bolt Associates Air Guns (120 and 20 cubic inches)
 Hydrophone Streamer: Teledyne SC 940
 Recorder: Edo
 Additional profiles on 35 mm microfilm.